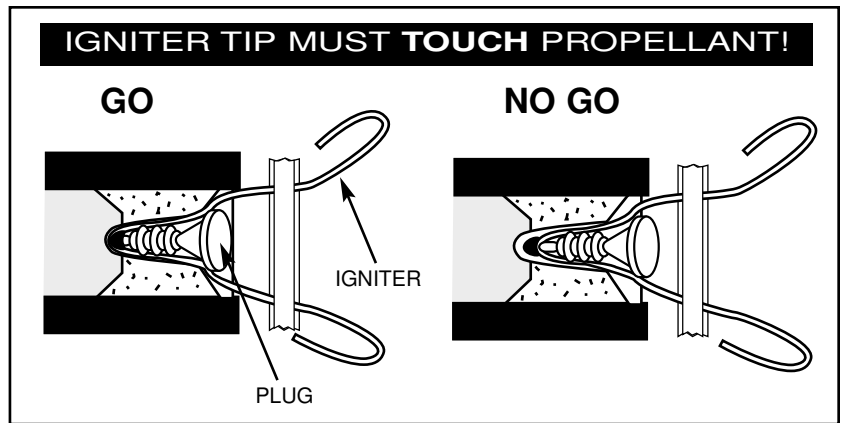


# Igniter Installation

About 90% of all problems with engine ignition are caused by the igniter not being properly installed and securely held in place in the engine.

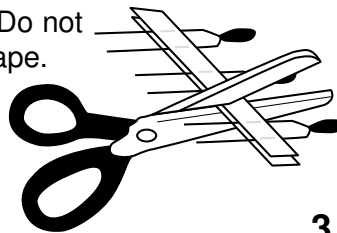
The igniter **must touch** the propellant at the moment the igniter is heated for ignition.



## MODEL ROCKET IGNITER INSTALLATION

Always use electrical model rocket igniters with a model rocket launch controller.

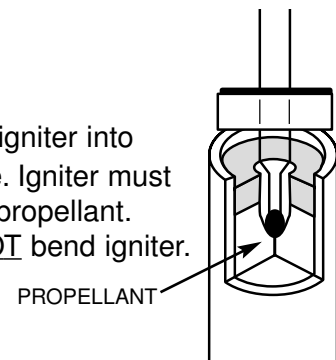
1. Cut tape separating igniters. Do not remove tape.



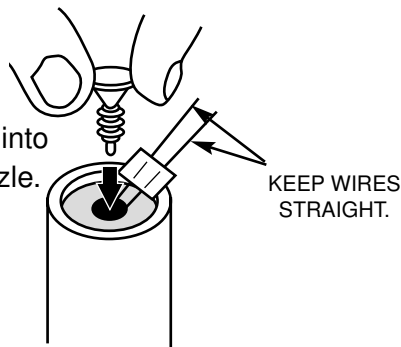
2. Separate plug from strip of plugs.



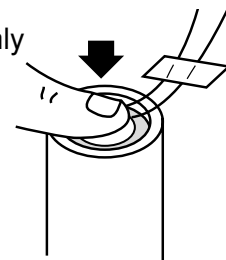
3. Insert igniter into engine. Igniter must touch propellant. Do **NOT** bend igniter.



4. Insert plug into engine nozzle.

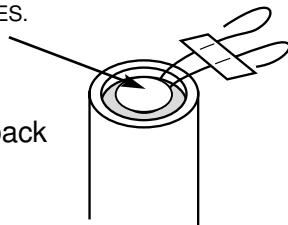


5. Push plug firmly into engine.



HOLD DOWN PLUG WITH THUMB WHEN YOU BEND WIRES.

6. Bend igniter wires back and form leads as shown.



7. Make sure micro-clips are clean. Attach micro-clips to the igniter wire leads as shown. Arrange the clips so they do not touch each other, the launch rod or the metal blast deflector.

